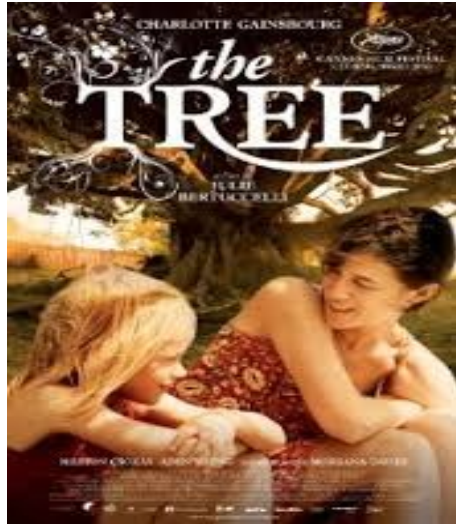


Title of the film: The Tree



**Director:** Julie Bertuccelli

**Release:** 2010

**Duration:** 1,37

**Genre:** drama

**Nationality:** multinational (set in Australia)

**Main actors and actresses:** Charlotte Gainsbourg

**Synopsis:** write a short summary and explain the function of the main characters.

In Australia, Peter, father to four and husband of Dawn, surprisingly dies. The family have to cope with his tragic death. While most family members go on with their lives after some time 8-year old Simone believes her father to be living on in the gigantic tree in their garden which at the same time more and more threatens the family's house because of its uncontrolled growth. In the end a cyclone destroys the tree and the house resulting in the family leaving the place.

**Why is this film connected to our Comenius Project?**

Obviously the tree plays a central role in the film ...

**What is the main idea of this film? Do trees have a symbolic role in it, a realistic one, both?**  
The tree symbolises death, so the family have to move out to protect themselves, trees are there longer than we are, the tree shows the circle of life, the death of the tree makes it possible for the family to move on, you have to live with change

You liked:	You didn't like:	You were surprised by:
Simone's character and the actress, the landscape, the little kangaroo ;-) that they planted a new tree	A sad film, difficult to like the film	The behaviour of the mother,

**Do you think of another title of the film?**

Bye-bye Daddy, Life of a tree, Since you been gone,

**Do you think of another film dealing with trees / forests?**

The tree of life, Avatar, Rio; Magic tree, The Hunger Games, The Emerald Forest